

PEOPLE'S COMMITTEE OF VINH LONG PROVINCE



# VINH LONG

COOPERATION FOR SUSTAINABLE DEVELOPMENT





Welcome gate of Vinh Long City. Photo: Nguyen Hoa Binh

## TABLE OF CONTENTS

Foreword	3
Geographical location	4
Some key socio-economic information of Vinh Long Province	6
Advantages of investing in Vinh Long	8
Strategic location	9
Complete infrastructure	10
Industrial park system	12
Regional human resource training center	14
Abundance of economic development potential	15
Open investment environment	17
Healthy living environment	18
Some reference information	18
Investment support policies of Vinh Long Province	19
Some key projects calling for investment	20
Development and investment orientation for the period 2021-2025	21
The process of granting investment registration certificates and approving investment policies	22
Necessary addresses	23

# FOREWORD

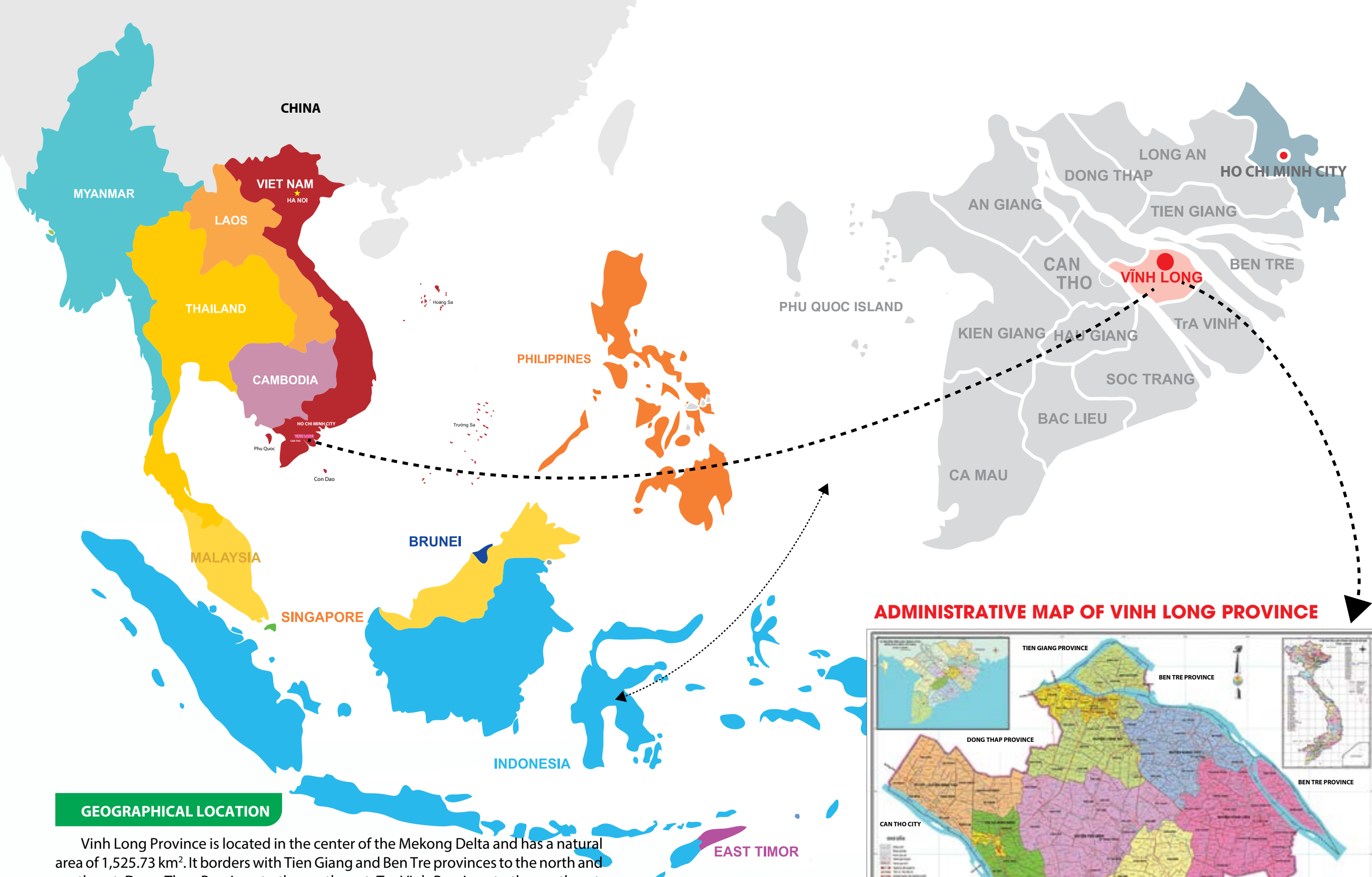
Vinh Long Province is located in the center of the Mekong Delta region. It has abundant and diverse potential in many fields, technically trained human resources, etc. In particular, the province always attaches importance to creating a favorable, safe and reliable investment environment for investors. It always puts businesses in an important position in its socio-economic development. According to the assessment by the international organization VNCI on the Provincial Competitiveness Index (PCI), Vinh Long Province has over the years continuously stood at a high position in the Mekong Delta region. It is also among the top open investment environments in the whole country.

Vinh Long Province has implemented drastic and synchronous solutions to improve the investment and business environment. Some examples are to reform administrative procedures, minimize paperwork, shorten time, and reduce registration costs for setting up businesses, granting registration certificates for investment, construction, declaration and tax payment, and create all favorable conditions for investors to implement projects in the locality. At the same time, the province has promoted the training and refresher of human resources for enterprises. It has also created a support system that is favorable for start-ups, ensuring freedom and creativity.

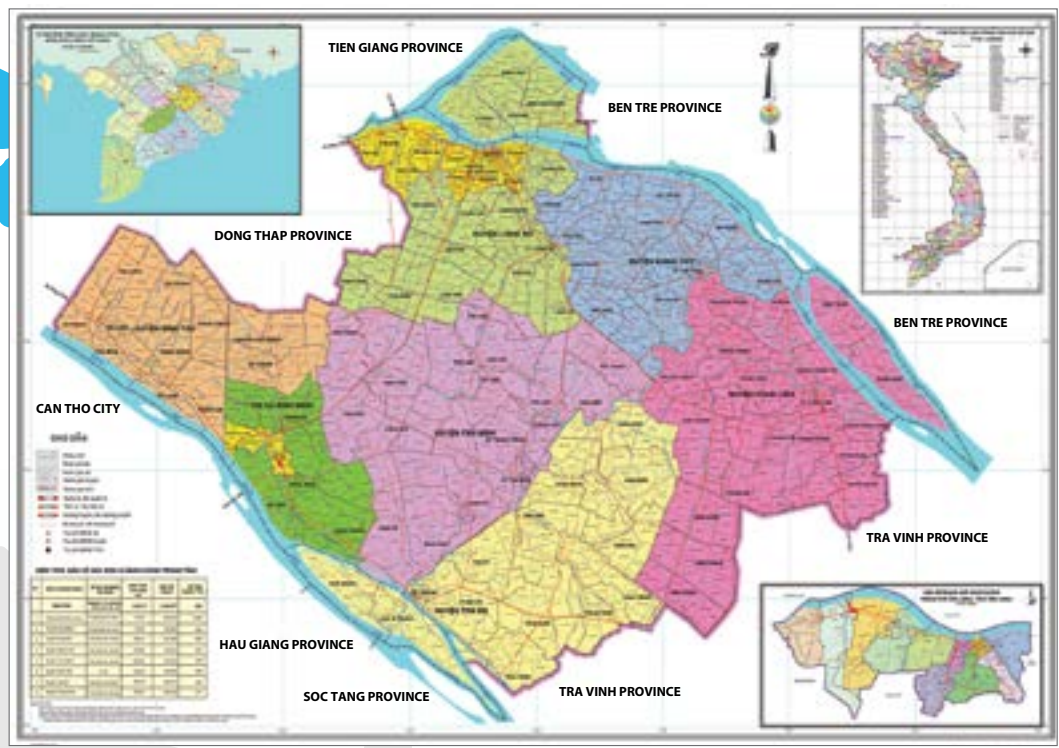
With a favorable geographical location, great potential along with a friendly, open, transparent “one-door, on-site” mechanism, and the spirit of cooperation and sustainable development, Vinh Long will definitely be a reliable choice for domestic and foreign investors.



Vinh Long City at night. Photo: Nguyen Hoa Binh



**ADMINISTRATIVE MAP OF VINH LONG PROVINCE**



**GEOGRAPHICAL LOCATION**

Vinh Long Province is located in the center of the Mekong Delta and has a natural area of 1,525.73 km<sup>2</sup>. It borders with Tien Giang and Ben Tre provinces to the north and northeast, Dong Thap Province to the northwest, Tra Vinh Province to the southeast, and Can Tho City, Hau Giang Province and Soc Trang Province to the west.

Vinh Long Province has 8 administrative units, namely 6 rural districts (Binh Tan, Long Ho, Mang Thit, Tam Binh, Tra On, Vung Liem), Binh Minh Town and Vinh Long City.

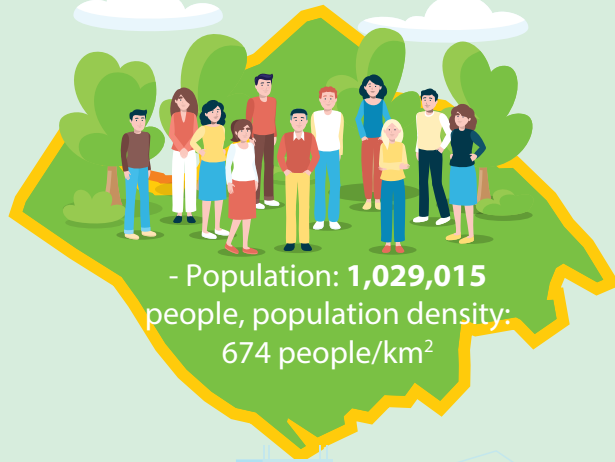
**SOME KEY SOCIO-ECONOMIC INFORMATION OF VINH LONG PROVINCE**



Vinh Long City. (source: Vinhlong.gov.vn)



- GRDP per capita: **55.49** million dong



- Population: **1,029,015** people, population density: 674 people/km<sup>2</sup>



- GRDP (at current prices): **57,095** billion dong  
- GRDP decrease: **4.55%** (compared to 2020)



- Workforce: about **583,972** people



- Total investment capital for social development in 2021: **14,213** billion dong



- Percentage of trained workers aged 15 and over in 2021: **15.6%**



- Total estimated state budget revenue in the locality in 2021 is: **8,069.9** billion VND

- Economic structure:



Agriculture, forestry and fishery: **39.76%**



Industry - construction: **17.87%**



Total retail sales of goods and service revenue:

**54,570** billion dong



Services: **42.46%**



Total export turnover: **512.2** million USD

Import turnover: **222.4** million USD

Vinh Long City. Photo: Nguyen Hoa Binh



**Strategic location**

Vinh Long is located in the center of the Mekong Delta, between two large rivers, namely the Tien and Hau rivers, about 135 km from Ho Chi Minh City - the country's largest economic center, about 33km from Can Tho City - the region's economic center and about 43 km from Can Tho International Airport. From Vinh Long and by water and land transport routes, it is convenient and quick to travel between provinces and municipalities in the region and the whole country.

**Complete infrastructure**

There are 05 national highways and 03 national river routes in the province. Most national highways and provincial roads have received investment in upgrading, expanding, connecting with industrial parks and clusters. This ensures smooth, quick and convenient traffic of vehicles and goods trade from the province to the country's economic centers. In particular, the Trung Luong - My Thuan Expressway is about to be put into operation in early 2022. Besides, the My Thuan - Can Tho Expressway and the My Thuan 2 Bridge are expected to be operational in 2023. The infrastructure will create more socio-economic development impetus for Vinh Long Province in particular and the Mekong Delta in general.

**Regional Human Resource Training Center**

Vinh Long is home to a system of universities, colleges, professional and vocational schools with good facilities and technologies. This ensures an abundant supply of trained human resources for the province and the whole region.

**Abundance of economic development potential**

Vinh Long has a lot of potential and advantages for economic development in many different fields, 03 main pillars of which are agriculture, industry, and trade - services.

**Open investment - business environment**

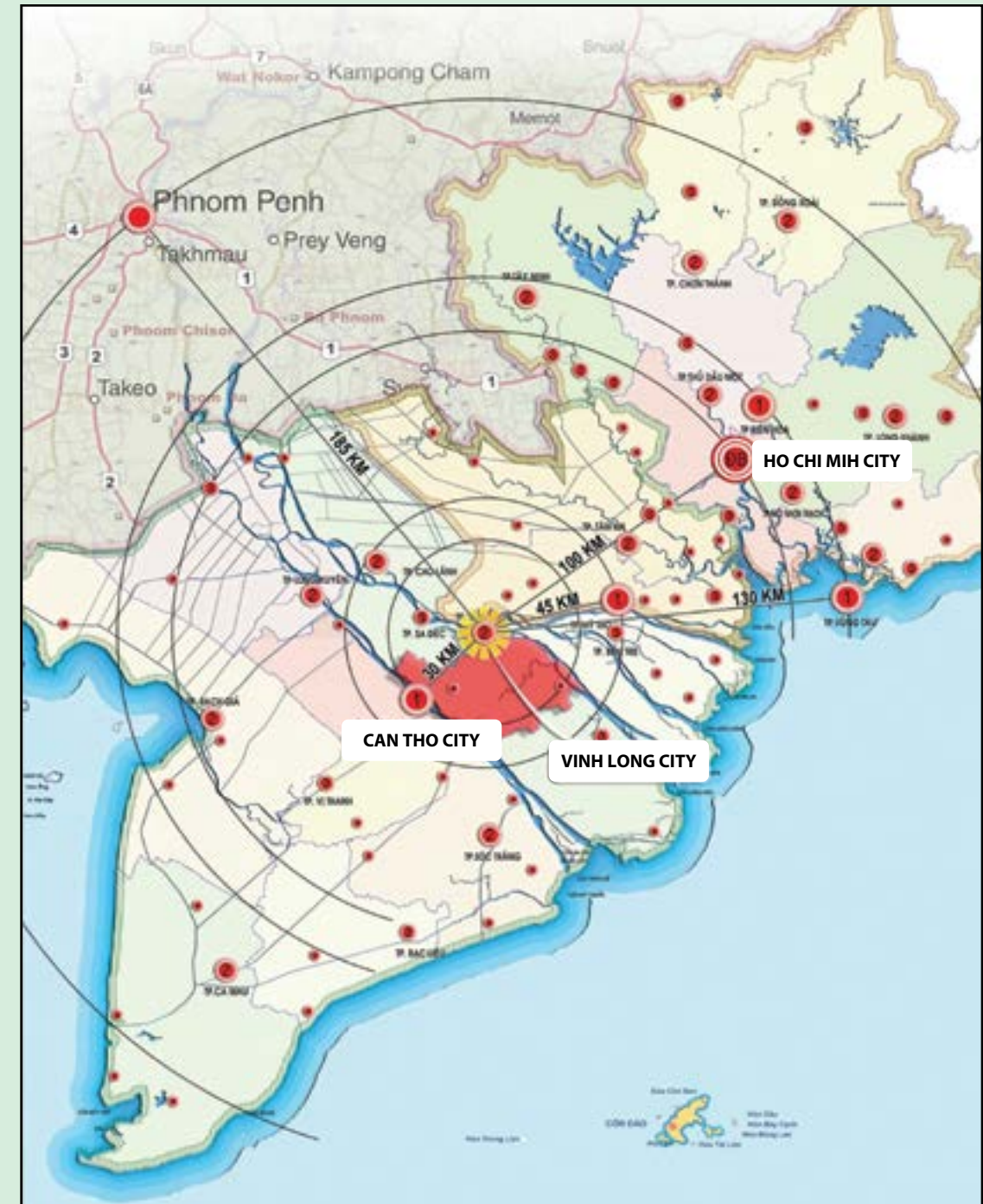
According to the Provincial Competitiveness Index (PCI) rankings published annually by the Vietnam Chamber of Commerce and Industry (VCCI) and the United States Agency for International Development (USAID), Vinh Long is one of the very few localities in the country that maintains the achievement of being always in the "good" and "very good" groups for 5 consecutive years from 2016 to 2020 in terms of economic management quality. Particularly, Vinh Long ranked 3rd and 6th out of 63 provinces and municipalities nationwide in 2019 and 2020, respectively.



Vinh Long Province has an important strategic location which is in the center of the Mekong River Delta - a key agricultural area of the country, and at the same time located between two major economic centers, namely Ho Chi Minh City (about 135 km by National Highway 1 and over 100 km by Ho Chi Minh City - Can Tho Expressway to the north) and Can Tho City (about 34 km to the south).



Harvesting rambutans. Photo: Nguyen Hoa Binh





Perspective of My Thuan 2 Bridge

**- Transport infrastructure**

With the central location of the Mekong Delta, Vinh Long Province is convenient to reach by both road and water with through traffic within the province, between provinces and nationwide.

**Road Traffic:** There are 15 main roads with a total length of over 400km, including 05 national highways (National Highway 1, National Highway 53, National Highway 54, National Highway 57 and National Highway 80 and Ho Chi Minh - Can Tho Expressway crossing Vinh Long).

**Water traffic:** There is an interlaced network of rivers with a total length of about 955 km including 03 national waterways, namely Tien river, Hau river and Mang Thit river.

**Air traffic:** Vinh Long City Center is about 43 km from Can Tho International Airport and about 135 km from Tan Son Nhat International Airport.

**Rail traffic:** Ho Chi Minh City - Can Tho Railroad (passing through Vinh Long Province) has been included in the National Railroad Network Master Plan up to 2030.

**- River ports:** Vinh Long has 03 river ports to meet the needs of loading, unloading and transporting goods. They are:

+ Vinh Long Port (Tien River): The port's throughput capacity is 550,000 metric tons/year. It can admit ships with a tonnage of up to 5,000 metric tons to dock. The port has a storage system of about 20,000 metric tons.

+ Binh Minh Port (Hau river): The port's throughput capacity reaches 470,000 metric tons/year. By design, it can admit ships with a tonnage of up to 20,000 metric tons/year. Currently, ships with a tonnage of up to 7,000 metric tons can enter and exit the port easily.

+ An Phuoc Port (Co Chien River): The port's throughput capacity is 250,000 metric tons/year. It can admit ships and barges with a tonnage of 3,000 metric tons.

**Electricity and energy infrastructure**

Vinh Long 220KV power station supplies electricity mainly to Vinh Long and Tra Vinh provinces. 220KV substations are the main power supply for all 03 substations of 110KV in the province (with a total capacity of 125 MVA).

Regarding the power distribution grid, it is currently operating at voltage levels of 15KV and 22KV. The entire medium voltage grid is designed at a 22KV level and currently has 2,105 km of medium voltage lines.

The low-voltage grid has a total length of 3,547km and 5,241 distribution substations with a total capacity of 413,952 KVA.

Currently, the national grid has covered 100% of communes, wards and townlets in the province, meeting the needs of the people and serving well the production and business activities of enterprises.

**- Water supply system**

Currently, the province has 12 water supply plants, with a total capacity of 48,800 m3 per day and night and 150 km of water supply pipes of all kinds, meeting the needs of daily life and serving production and business.



**- Communications system**

The telecommunications infrastructure is widespread from urban to rural areas in the province, with a system of modernly equipped technical facilities and advanced technology to meet the needs of customers of all kinds

**- Financial and banking system**

There are 20 branches of joint-stock commercial banks in Vinh Long Province, including 01 social policy bank, 01 development bank, 01 investment fund and 04 grassroots people's credit funds. More than 101 transaction points of bank branches are widely scattered throughout all districts, towns and cities, satisfactorily and timely solving capital needs for production and business activities.



Vinh Long Province has 02 industrial parks in operation, namely:

**Hoa Phu Industrial Park:** Located in Hoa Phu Commune, Long Ho District, Vinh Long Province with a total area of 260ha, 12km from Vinh Long City and 20km from Can Tho City. The infrastructure is modern and synchronous, meeting the needs of investors.

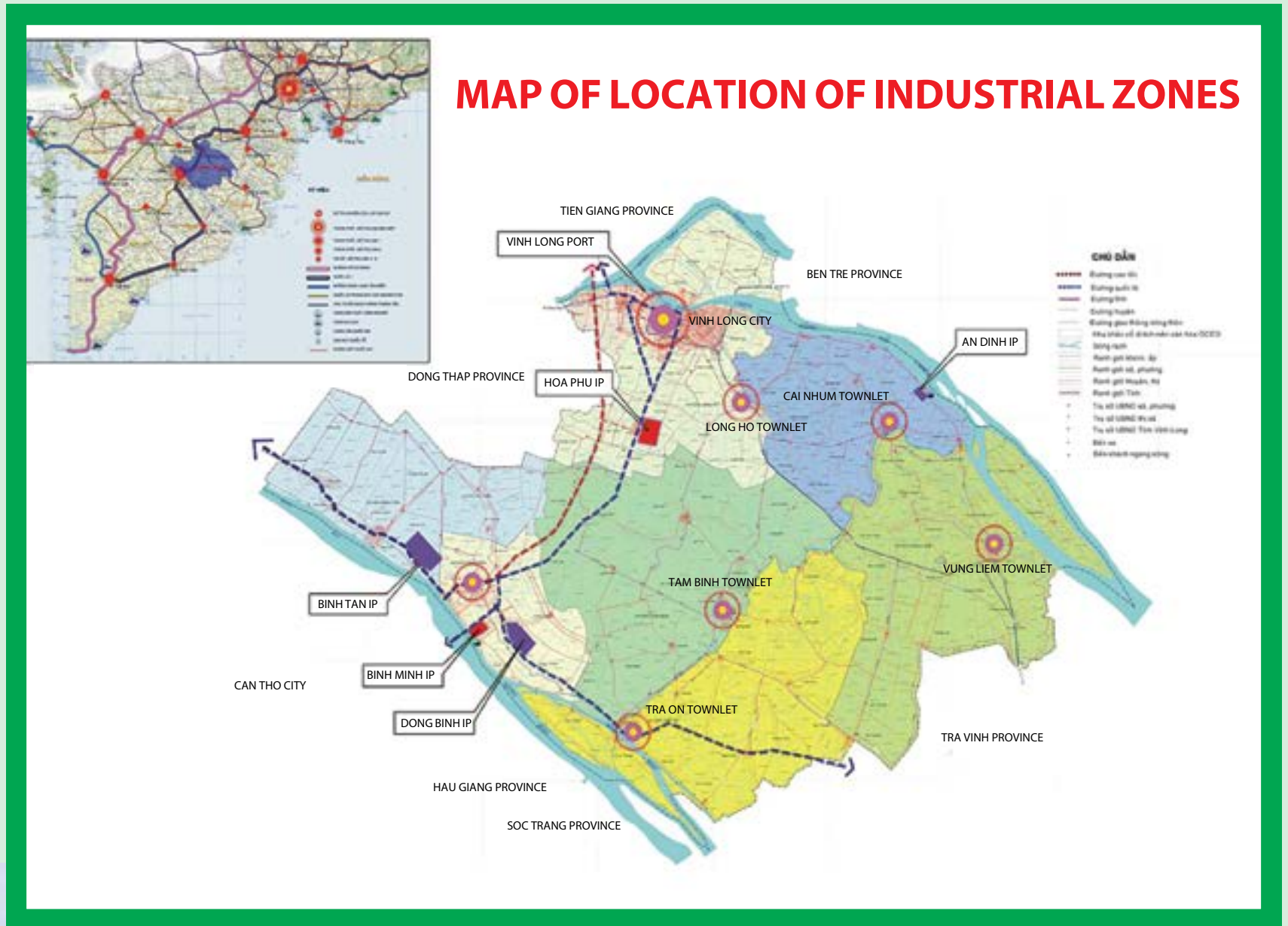
The wastewater treatment plant has a capacity of 4,000m<sup>3</sup>/day/night. The wastewater treatment to the environment achieves grade A according to Vietnamese standards.

Currently, the industrial land area for lease in the two phases has been occupied. The investors are carrying out the procedures to apply for a permit for 3rd-phase expansion (with an expected area of 155.37ha).

**Binh Minh Industrial Park:** Located in My Hoa Commune, Binh Minh Town with a total area of 135 hectares, 33km from Vinh Long City and 05km from Can Tho City, which is convenient for road and air traffic. It is also located adjacent to Binh Minh Port - Logistics System, and about 10 km from Cai Cui Port, Can Tho Port and Can Tho International Airport. The infrastructure is modern and synchronous, meeting the needs of investors. Currently, the industrial land area available for lease is about 07 hectares.

The wastewater treatment plant has a capacity of 5,000m<sup>3</sup>/day/night. In Phase I, the capacity is 2,200 m<sup>3</sup>/day/night. The wastewater treatment to the environment achieves grade A according to Vietnamese standards.

In addition, the province has planned 03 more industrial parks with an area of 950 hectares. They are Dong Binh Industrial Park (Dong Binh Commune, Dong Thanh Commune, Binh Minh Town) which has been granted a decision on investment policy by the Prime Minister with an area of 350ha (site clearance currently underway), Binh Tan Industrial Park (Tan Quoi Townlet and Thanh Loi Commune, Binh Tan District) with an area of 400 hectares and An Dinh Industrial Park (An Phuoc Commune, Mang Thit District) with a scale of 200 hectares in which investors are carrying out procedures for investment.





University of Economics HCM City- Vinh Long Branch  
(source: ueh.edu.vn/vinh-long)



Mien Tay Construction University  
(source: mtu.edu.vn)



Mekong University (source: mku.edu.vn)

Along with Can Tho City, Vinh Long Province is one of the two largest human resource training centers in the Mekong Delta. There are 04 universities in the province (Mien Tay Construction University, Vinh Long University of Technology Education, Mekong University and University of Economics Ho Chi Minh City - Vinh Long Branch); 03 colleges; 01 vocational secondary school. Every year, these training institutions train over 25,000 skilled and technical workers.

The labor force in the working age (15 years and above) is 583,972 people, most of whom are young workers. The percentage of labor with technical expertise in the province reached 15.6%.



Vinh Long University of Technology Education (source: vlute.edu.vn)



**Agriculture**

With a temperate climate and fertile soil, Vinh Long Province annually produces over 818,000 metric tons of rice and about 235,000 metric tons of sweet potatoes of all kinds along with specialty fruit trees with high economic value such as Nam Roi pomelos, king oranges, longans, rambutans, etc. with an annual output of 934,000 metric tons.

Fishery is one of the breakthroughs of the province, with a farming area of about 2,485 hectares and an output of aquatic products (mainly tra catfish and red tilapia) reaching nearly 134,000 metric tons/year.

Livestock husbandry (mainly chickens, cows and pigs) has an annual output of over 8 million head.

**Industry**

Key industries with great potential include processing of agricultural products, food, especially rice and aquatic products; animal, poultry and aquatic feed; pharmaceutical products, etc. in addition to famous traditional industries such as handicrafts, bricks and ceramics.



Harvesting pomelos. Photo: Nguyen Hoa Binh



Harvesting sweet potatoes (source: cctbtvt.vinhlong.gov.vn)





Co.opmart Vinh Long supermarket. Photo Nguyen Hoa Binh



**Trade and services - Tourism**

Trade and services are diversified with a wide network of supermarkets, convenience stores and traditional markets evenly distributed in the province.

**Domestic trade:** Total retail sales of goods and services in 2021 reached 54,570 billion VND.

**Export:** Total export turnover of goods in 2021 reached 512.2 million USD.

**Import:** Import turnover in 2021 reached 222.4 million USD.



River tourism in Vinh Long. Photo: Huynh Bien

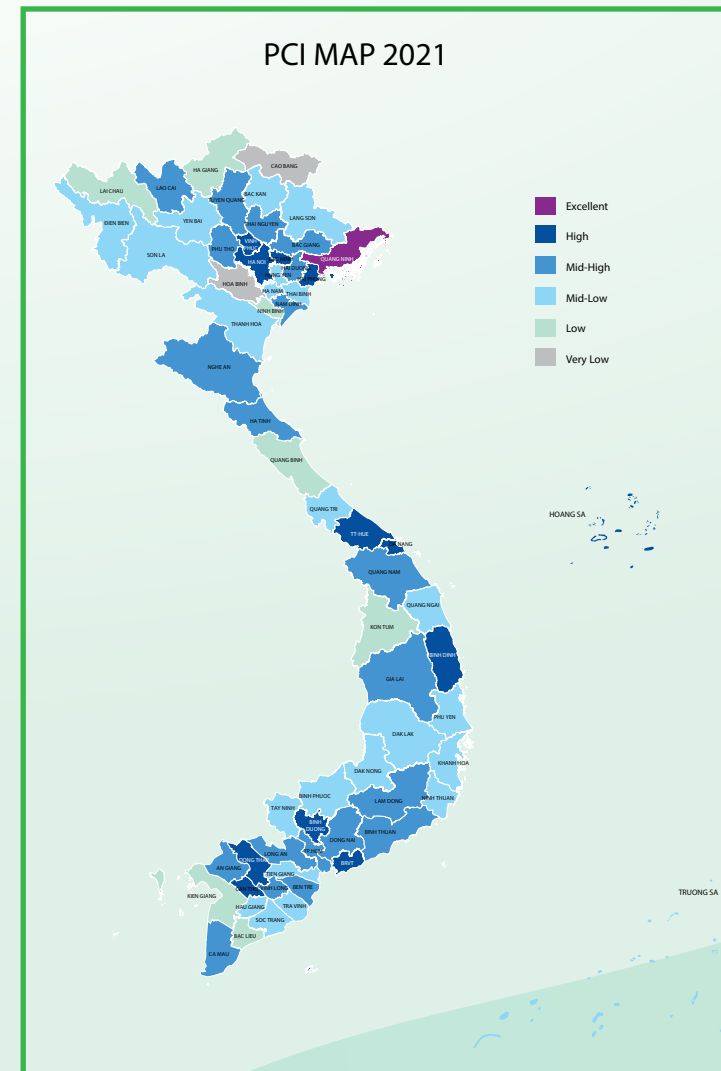
Tourism is one of the province's economic sectors with great potential characterized by eco-tourism (rivers, canals, gardens, etc.). In addition, Vinh Long also has rich humanistic tourism resources with more than 700 historical-cultural relics, including 11 national-level relics and 48 provincial-level relics along with 25 craft villages and 30 garden tourist attractions associated with historical-cultural relics, people's daily lives, homestay experiences. They have become more and more attractive to tourists.

According to the assessment by the Vietnam Chamber of Commerce and Industry (VCCI) with research cooperation and support from the United States Agency for International Development Cooperation (USAID) on the provincial competitiveness index (PCI), Vinh Long has over the years stood at a high position in the Mekong Delta region and at the top of the country with a very good investment environment. In 2021, despite the

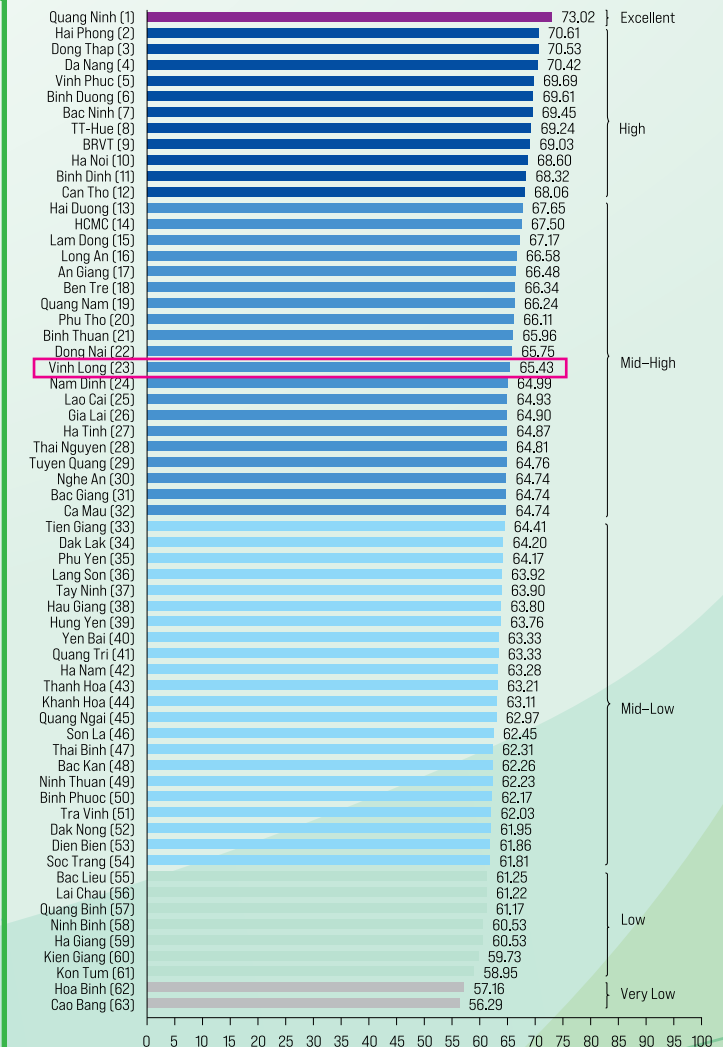
complicated developments of the Covid-19 epidemic, provinces and cities still make great efforts to reform and create a favorable business environment for businesses and investors. The positive signal of the business environment is reflected in a number of indicators that are having a strong momentum of improvement and reform. PCI results in 2021: ranked 23/63 provinces and cities nationwide and ranked 6/13 provinces and cities in the Mekong Delta.

**PCI 2021 OF VINH LONG AS AGAINST THE WHOLE COUNTRY**

Vinh Long was classified as a good operator with a PCI score of 65.43 points in 2021 and ranked 23th out of 63 provinces and municipalities in the country.



**PROVINCIAL COMPETITIVE INDEX (PCI) IN 2021**



Vinh Long Province is located in the tropical monsoon region. Its climate is divided into two distinct seasons: rainy season and dry season with annual rainfall averaging 1,518 -1,650mm, daily sunshine duration averaging of 9-10 hours and an average temperature of 26-27°C.

With a temperate climate, fertile soil, year-round freshwater, luxuriant fruit orchards of four seasons, beautiful nature and friendly people, Vinh Long is a suitable place to live and work in.



SOME REFERENCE INFORMATION

<p><b>Human Resources</b></p>	<p>* Population (2021): 1,022,015 people. Including: -Male population: 506,976 people (accounting for 49.27% of the total population) -Female population: 522,048 people (50.73% of the total population) *Working-age population (&gt;15 years old): 583,972 people *Percentage of trained workers aged 15 and over in 2021: 15.6%.</p>
<p><b>Labor cost (for reference)</b></p>	<p>*Minimum salary: Applicable minimum salary by region in businesses as from January 1, 2022 is 4,160,000 VND/month ≈ 177 USD/month (Region II) in Vinh Long City, Binh Minh Town; Long Ho and Mang Thit Districts apply salary the minimum is 3,640,000 VND/month = 155 USD/month (Region III) and the remaining districts applying the minimum salary of 3,250,000 VND/month = 138 USD/month (Region IV).</p>
<p><b>Land rental price of Binh Minh Industrial Park (for reference only)</b></p>	<p>*Land rental price in the industrial park: From 83 USD/m<sup>2</sup>/35 years (including VAT) *Factory rental price: 1.9 – 2.4 USD/m<sup>2</sup> (Rental area from 300 – 10,000m<sup>2</sup>). *Maintenance fee for industrial park infrastructure and management fee: 0.3 USD/m<sup>2</sup>/year (excluding VAT), increasing by 10% every 5 years. *Wastewater treatment fee: 0.3USD/m<sup>3</sup></p>



**1. Support for investment preparation**

Supporting 80% of the cost of detailed construction planning and investment project formulation, according to the cost norms of project management and construction investment consultancy issued by the Ministry of Construction from time to time. However, maximum support does not exceed 01 billion VND/project (particularly for projects without detailed construction planning, maximum support is no more than 500 million VND/project).

**2. Support for the cost of compensation and site clearance (including land, assets and structures on the land)**

Supporting 20% of the total cost of compensation and site clearance, but no more than 05 billion VND/project. The support value is applied according to the price bracket prescribed by the State and approved by a competent authority.

**3. Support for the construction cost of a standardized wastewater treatment plant**

Supporting 50% of the cost of building a grade-A wastewater treatment plant according to current standards, but no more than 05 billion VND/project.

**4. Credit support**

Supporting 2%/year of loan interest rate for investment in fixed assets from domestic commercial banks or from the Provincial Development Investment Fund for a period of 03 years from the date that the project comes into production and business.

**5. Support for the construction of traffic technical infrastructure for projects located outside high-tech parks, industrial parks, and industrial clusters**

Supporting investment in traffic technical infrastructure to enterprises' fences with a maximum distance of no more than 1,000m from the connection point to the main traffic axis but not exceeding the connection road level. Total support does not exceed 03 billion VND/project for investment projects on the list promulgated in the Appendix to this Resolution and in accordance with the development planning of the province.

**6. Support for investment in infrastructure business of hi-tech parks, industrial parks, industrial clusters**

Supporting 100% of the investment in road construction to the fences of hi-tech parks, industrial parks, and industrial clusters, but the design and cost estimates must

be appraised and approved by participating competent authorities.

The support for investment capital to build an infrastructure system is 50 billion VND per industrial park and 25 billion VND per industrial cluster.

**7. Support for and investment in hi-tech agriculture investment projects; safe vegetable production areas according to Good Agricultural Practices (GAP); developing concentrated material areas for the vegetable, tuber and fruit processing industry; creating high-quality rice fields**

- Supporting 50% of the investment costs in factory construction, purchase of machinery and equipment, installation of automatic watering systems, product packaging and preservation (excluding office construction costs). The total support does not exceed 02 billion VND/project.

- The (one-time) support is equal to 100% of the cost of hiring a consulting organization for guidance, certification and evaluation to be granted with a safe product certificate, but no more than 200 million VND/enterprise. The content of such hiring cost must be consistent with current regulations.

- Supporting 100% of the investment costs in the construction of technical infrastructure works leading up to enterprises' fences of concentrated production areas with a maximum of 03 billion VND/project.

- Investment projects eligible for support and investment of this kind must ensure the following conditions:

+ The scale of the concentrated raw material production area is 30 hectares or more for fruit trees and 20 hectares for vegetables. Particularly for the project to create high-quality rice fields, the scale of regional concentrated raw material production is 50 hectares or more;

+ The project is in the approved planning of a competent state authority or is approved by the Provincial People's Committee for investment if there is no approved planning.

In addition to the above support, the province also provides support in human resource training; advertising costs; and investment promotion funds. Other support can be offered to enterprises in technological innovation and funding campaigns to attract investment.

(Excerpt from Resolution No. 97/2018/NQ-HDND, dated February 1, 2018 of Vinh Long Province People's Council on promulgating Regulations on investment support policies of Vinh Long Province)



## DEVELOPMENT AND INVESTMENT ORIENTATION FOR THE PERIOD 2021-2025

\* Striving to create breakthroughs in economic restructuring, production restructuring in each industry and each field; to develop large-scale, high-tech agriculture; promote industry, create a driving force for economic growth, especially the processing industry of agricultural products; promoting comparative advantage for tourism development.

\* Promoting internal resources and implementing modernization step by step with a focus on urban infrastructure, traffic, electricity, irrigation, information and communications technology infrastructure; linking the development of agriculture and tourism in the overall relationship with the provinces in the Mekong Delta and the Greater Mekong Subregion; developing urban centers into key centers that promote the development of sub-areas in the province.

\* Focusing on developing high-quality human resources; improving workmanship and working skills for workers; training experts in technology and business management; creating an environment to attract local high-quality human resources.

\* Associating socio-economic development with climate change adaptation and sea level rise in line with each industry and field, ensuring multi-objective, effective and sustainable development.



## LIST OF PROJECTS CALLING ON INVESTMENT CAPITAL OUTSIDE THE STATE BUDGET IN VINH LONG PROVINCE, PERIOD 2020-2025

(According to Decision no. 2167/QĐ-UBND, dated August 20<sup>th</sup>, 2020 and Official Dispatch no. 2602/UBND- KTNV, dated May 18<sup>th</sup>, 2022 of the People's Committee of Vinh Long province)

NO.	NAME OF PROJECT	LOCATION	SCALE/ CAPACITY	INVESTMENT CAPITAL ESTIMATE	FORM OF INVESTMENT	RELATED INFORMATION	CONTACT INFORMATION
<b>A. INDUSTRIAL FIELDS</b>							
1	<b>BINH TAN INDUSTRIAL PARK PROJECT</b>	Thanh Loi commune and Tan Quoi townlet, Binh Tan district	400 ha	2.900 billion dong	Call on 100% capital of investors or joint ventures to implement the project	-The land has not been cleared. -Investment fields: processing agricultural products - food, processing vegetables and fruit products; seafood processing; products from livestock; industry of consumer goods, textiles, handicrafts, electronic assembly industry, packaging, pharmaceutical - cosmetics industry, mining industry and other construction material production...; warehousing, service and some other industries with less environmental pollution.....	Department of Planning and Investment; Management Board of Industrial Parks and People's Committee of Binh Tan district (have investors)
2	<b>AN ĐINH INDUSTRIAL PARK PROJECT</b>	An Phuoc commune, Mang Thit district	200 ha	1.600 billion dong	Call on 100% capital of investors or joint ventures to implement the project	-The land has not been cleared. -Investment fields: processing agricultural products - food, processing vegetables and fruit products; seafood processing; products from livestock; industry of consumer goods, textiles, handicrafts, electronic assembly industry, packaging, pharmaceutical - cosmetics industry...	Department of Planning and Investment; Management Board of Industrial Parks and People's Committee of Mang Thit district (have investors)
3	<b>PROJECT OF INVESTMENT, CONSTRUCTION AND INFRASTRUCTURE BUSINESS OF INDUSTRIAL CLUSTER IN VINH LONG CITY</b>	Tan Hoi ward, Vinh Long city	50 ha	325 billion dong	Call on 100% capital of investors or joint ventures to implement the project	-The land has not been cleared. -According to the plan. in the direction of developing multi-industry clusters.	Department of Planning and Investment; Department of Industry and Trade; People's Committee of Vinh Long city
4	<b>PROJECT OF INVESTMENT, CONSTRUCTION AND INFRASTRUCTURE BUSINESS OF INDUSTRIAL CLUSTER IN PHUOC TRUONG HAMLET – PHUOCTHO</b>	Phuoc Truong hamlet – Phuoc Tho, Quoi An commune, Vung Liem district	48,7 ha	318 billion dong	Call on 100% capital of investors or joint ventures to implement the project	-The land has not been cleared. -Approved the plan in 2012. in the direction of developing specialized industrial clusters.	Department of Planning and Investment; Department of Industry and Trade; People's Committee of Vung Liem district
5	<b>PROJECT OF INVESTMENT, CONSTRUCTION AND INFRASTRUCTURE BUSINESS OF INDUSTRIAL CLUSTER – COTTAGE INDUSTRY IN THUAN AN</b>	Thuan Tien hamlet, Thuan An commune, Binh Minh town	72,9 ha	650 billion dong	Call on 100% capital of investors or joint ventures to implement the project	-The land has not been cleared. -Approved the plan in 2009. in the direction of developing multi-industry clusters.	Department of Planning and Investment; Department of Industry and Trade; People's Committee of Binh Minh town
6	<b>PROJECT OF INVESTMENT, CONSTRUCTION AND INFRASTRUCTURE BUSINESS OF VINH THANH INDUSTRIAL CLUSTER</b>	Vinh Thanh hamlet, Huu Thanh commune, Tra On district	60 ha	390 billion dong	Call on 100% capital of investors or joint ventures to implement the project	-The land has not been cleared. -Detailed planning has not been approved. in the direction of developing specialized industrial clusters.	Department of Planning and Investment; Department of Industry and Trade; People's Committee of Tra On district



NO.	NAME OF PROJECT	LOCATION	SCALE/ CAPACITY	INVESTMENT CAPITAL ESTIMATE	FORM OF INVESTMENT	RELATED INFORMATION	CONTACT INFORMATION
7	<b>PROJECT OF INVESTMENT, CONSTRUCTION AND INFRASTRUCTURE BUSINESS OF MY LOI INDUSTRIAL CLUSTER</b>	My Loi hamlet, Thien My commune, Tra On district	50 ha	325 billion dong	Call on 100% capital of investors or joint ventures to implement the project	-The land has not been cleared. -Detailed planning has not been approved. in the direction of developing specialized industrial clusters.	Department of Planning and Investment; Department of Industry and Trade; People's Committee of Tra On district (According to official dispatch no. 2602/UBND-KTNV, dated may 18 <sup>th</sup> , 2022 of the People's Committee of Vinh Long province)
8	<b>PROJECT OF INVESTMENT, CONSTRUCTION AND INFRASTRUCTURE BUSINESS OF TAN BINH INDUSTRIAL CLUSTER</b>	Tan Binh commune, Binh Tan district	40,72 ha	265 billion dong	Call on 100% capital of investors or joint ventures to implement the project	-The land has not been cleared. -Approved the plan in 2013. in the direction of developing multi-industry clusters.	Department of Planning and Investment; Department of Industry and Trade; People's committee of Binh Tan district (According to official dispatch no. 2602/UBND-KTNV, dated may 18 <sup>th</sup> , 2022 of the People's Committee of Vinh Long province)
9	<b>PROJECT OF INVESTMENT, CONSTRUCTION AND INFRASTRUCTURE BUSINESS OF AP BA INDUSTRIAL CLUSTER</b>	Cai Nhum townlet, Mang Thit district	21,66 ha	140 billion dong	Call on 100% capital of investors or joint ventures to implement the project	-The land has not been cleared. -Detailed planning has not been approved. in the direction of developing specialized industrial clusters.	Department of Planning and Investment; Department of Industry and Trade; People's committee of Mang Thit district
10	<b>PROJECT OF INVESTMENT, CONSTRUCTION AND INFRASTRUCTURE BUSINESS OF AP NHAT B INDUSTRIAL CLUSTER</b>	Cai Nhum townlet, Mang Thit district	24,37 ha	158 billion dong	Call on 100% capital of investors or joint ventures to implement the project	-The land has not been cleared. -Detailed planning has not been approved. in the direction of developing specialized industrial clusters.	Department of Planning and Investment; Department of Industry and Trade; People's Committee of Mang Thit district
<b>B. AGRICULTURE - RURAL FIELDS</b>							
11	<b>AGRICULTURE PRODUCTION ZONE PROJECT WITH HIGH TECHNOLOGY APPLICATION</b>	1. Tan Nhon hamlet, Tan Hoa ward; Vinh Binh hamlet, Tan Ngai ward, Vinh Long city. 2. Dong Binh commune, Binh Minh town. 3. Thien My commune; Luc Si Thanh and Phu Thanh commune; Huu Thanh commune, Tra On district. 4. Binh Phuoc commune, Long My commune, Tan Long commune, My Phuoc commune and Chanh Hoi commune, Mang Thit district. 5. Phuoc Hanh B hamlet, Phuoc Hau commune, Long Ho district. 6. Hau Thanh hamlet, Long An commune, Long Ho district. 7. Binh Hoa 2 hamlet, Binh Hoa Phuoc commune, Long Ho district. 8. Phuoc Trinh hamlet, Long Phuoc commune, Long Ho district. 9. Binh Phung hamlet, Ruot Ngua hamlet and Muop Sat hamlet, Trung Hiep commune, Vung Liem district.	50 ha – 100 ha	250 billion dong	Call on 100% capital of investors or joint ventures to implement the project	-The land has not been cleared.	Department of Planning and investment; Department of Agriculture and Rural Development and People's Committees of districts, towns and city

NO.	NAME OF PROJECT	LOCATION	SCALE/ CAPACITY	INVESTMENT CAPITAL ESTIMATE	FORM OF INVESTMENT	RELATED INFORMATION	CONTACT INFORMATION
12	<b>CONSTRUCTION PROJECT OF AGRICULTURAL PRODUCT PROCESSING FACTORY</b>	1. Thong Nguyen hamlet, Loan My commune, Tam Binh district. 2. Nuoc Xoay hamlet, Tan An Luong commune, Vung Liem district.	10 ha	300 billion dong	Call on 100% capital of investors or joint ventures to implement the project	-The land has not been cleared.	Department of Planning and Investment; Department of Agriculture and Rural Development and People's Committee where the project is located
13	<b>INVESTMENT PROJECT ON SAFE VEGETABLE FARM FOR EXPORT</b>	1. Thuan Tien C hamlet, Thuan An commune, Binh Minh town. 2. Phong Thoi hamlet and Rach Truc, Vung Liem town. 3. Trung Trach and An Nhon hamlet, Trung Thanh commune, Vung Liem district. 4. Tan Phuoc hamlet, Tan Binh commune, Binh Tan district. 5. Phuoc Loi B hamlet, Phuoc Hau commune, Long Ho district.	30 ha	30 billion dong/ project	Call on 100% capital of investors or joint ventures to implement the project	According to planning	Department of Planning and Investment; Department of Agriculture and Rural Development and People's Committees of districts, towns where the project is located
14	<b>INVESTMENT PROJECTS ON PRODUCTION AND PROCESSING OF AGRICULTURAL PRODUCTS</b>	Dong Thuan ward, Binh Minh town	10,6 ha	400 billion dong	Call on 100% capital of investors or joint ventures to implement the project	Public land, clean land (site number 2)	Department of Planning and Investment; Department of Agriculture and Rural Development and People's Committees of Binh Minh town
15	<b>INVESTMENT PROJECT ON CONSTRUCTION AND BUSINESS OF CATTLE AND POULTRY SLAUGHTERING ESTABLISHMENTS FOCUSING ON FOOD SAFETY</b>	Loc Hoa commune, Long Ho district	200 cattle and 2,000 poultry/day and night or 400 cattle/day and night or 4,000 poultry/day and night	40 billion dong	Call on 100% capital of investors or joint ventures to implement the project	According to planning	Department of Planning and Investment; Department of Agriculture and Rural Development and People's Committees of Long Ho district
16	<b>INVESTMENT PROJECT ON CONSTRUCTION AND BUSINESS OF RICE DRYING, AND FOOD PROCESSING PLANTS</b>	Tuong Nhon hamlet, Tuong Loc commune and hamlet 9, Hoa Hiep commune, Tam Binh district	150 ton/day	15 billion dong/ project	Call on 100% capital of investors or joint ventures to implement the project	According to planning	Department of Planning and investment; Department of Agriculture and rural Development and People's Committees of Tam Binh district
17	<b>PROJECT OF ESTABLISHING A CENTER FOR PURCHASING AND DISTRIBUTING HIGH-QUALITY AGRICULTURAL PRODUCTS IN VINH LONG PROVINCE</b>	Localities in the province in accordance with the planning to ensure convenience in transportation and circulation of agricultural products	10 – 30ha (300 – 450 ton/day)	200 billion dong	Call on 100% capital of investors or joint ventures to implement the project	According to planning	Department of Planning and investment; Department of Agriculture and Rural Development and People's Committees of districts where the project is located.
18	<b>PROJECT OF CHICKENS AND DUCKS BREEDING FARMS WITH HIGH QUALITY</b>	Localities in the province and in accordance with the agricultural planning	02 ha (approximately 50.000)	50 billion dong	Call on 100% capital of investors or joint ventures to implement the project	According to planning	Department of Planning and Investment; Department of Agriculture and Rural Development and People's Committees of districts where the project is located.



NO.	NAME OF PROJECT	LOCATION	SCALE/CAPACITY	INVESTMENT CAPITAL ESTIMATE	FORM OF INVESTMENT	RELATED INFORMATION	CONTACT INFORMATION
19	<b>INVESTMENT PROJECT ON CONSTRUCTION AND BUSINESS OF RICE DRYING, AND FOOD PROCESSING PLANTS</b>	Tich Thien commune, Tra On district	150 ton/day	15 billion dong/project	Call on 100% capital of investors or joint ventures to implement the project	According to planning	Department of Planning and Investment; Department of Agriculture and Rural Development and People's Committees of Tra On district
20	<b>PROJECT OF AQUACULTURE ASSOCIATED WITH ECOTOURISM</b>	Phu Thanh commune, Tra On district	25 ha	20 billion dong	Call on 100% capital of investors or joint ventures to implement the project	According to planning	Department of Planning and Investment; Department of Agriculture and Rural Development and People's Committees of Tra On district
21	<b>HIGH-TECH APPLICATION AGRICULTURAL ZONE PROJECT OF TAN HANH COMMUNE</b>	Tan Hung, Tan Binh, Tan Hiep, Tan Thuan hamlet, Tan Hanh commune, Long Ho district	716 ha	1.800 billion dong		-The land has not been cleared.	Department of Planning and Investment; People's Committees of Long Ho district (New proposal according to Official Dispatch No. 2602/UBND-KTNV, dated May 18, 2022 of the People's Committee of Vinh Long province)
22	<b>HIGH-TECH APPLICATION AGRICULTURAL ZONE PROJECT OF TAM BINH DISTRICT</b>	- An Phong, Binh Ninh hamlet, Ngai Tu commune, Tam Binh district - An Hoa A, An Hoa B, Binh An hamlet, Binh Ninh commune, Tam Binh district - Binh Hoa, Binh Phu, Tong Hung hamlet, Loan My commune, Tam Binh district	1.603 ha	4.050 billion dong	Call on 100% capital of investors or joint ventures to implement the project	-The land has not been cleared.	Department of Planning and Investment; People's Committees of Tam Binh district (New proposal according to Official Dispatch No. 2602/UBND-KTNV, dated May 18, 2022 of the People's Committee of Vinh Long province)
23	<b>PROJECT OF AGRICULTURAL ZONE APPLYING HIGH TECHNOLOGY ASSOCIATED WITH ECO-TOURISM IN PHU THANH COMMUNE - LUC SY THANH</b>	- Phu Loi, Phu Long, Phu Xuan, Phu Hung, Phu Sung hamlet, Phu Thanh commune, Tra On district - An Thanh, My Thanh, Long Hung, Kinh Dao hamlet, Luc Si Thanh commune, Tra On district	500 ha	1.250 billion dong	Call on 100% capital of investors or joint ventures to implement the project	-The land has not been cleared.	Department of Planning and Investment; People's Committees of Tra On district (New proposal according to Official Dispatch No. 2602/UBND-KTNV, dated May 18, 2022 of the People's Committee of Vinh Long province)
24	<b>HIGH-TECH APPLICATION AGRICULTURAL ZONE PROJECT OF THIEN MY COMMUNE</b>	My Hung, My Pho, My Hoa, My Trung hamlet, Thien My commune, Tra On district	200 ha	500 billion dong	Call on 100% capital of investors or joint ventures to implement the project	-The land has not been cleared.	Department of Planning and Investment; People's Committees of Tra On district (New proposal according to Official Dispatch No. 2602/UBND-KTNV, dated May 18, 2022 of the People's Committee of Vinh Long province)

NO.	NAME OF PROJECT	LOCATION	SCALE/CAPACITY	INVESTMENT CAPITAL ESTIMATE	FORM OF INVESTMENT	RELATED INFORMATION	CONTACT INFORMATION
25	<b>HIGH-TECH APPLICATION AGRICULTURAL ZONE PROJECT OF TAN MY COMMUNE</b>	My Dinh, My Phu, My Yen hamlet, Tan My commune, Tra On district	200 ha	500 billion dong	Call on 100% capital of investors or joint ventures to implement the project	-The land has not been cleared.	Department of Planning and Investment; People's Committees of Tra On district (New proposal according to Official Dispatch No. 2602/UBND-KTNV, dated May 18, 2022 of the People's Committee of Vinh Long province)
26	<b>PROJECT OF AGRICULTURAL ZONE APPLYING HIGH TECHNOLOGY ASSOCIATED WITH ECO-TOURISM IN CHANH AN COMMUNE</b>	My Long, Vam Lich hamlet, Chanh An commune, Mang Thit district	130 ha	325 billion dong	Call on 100% capital of investors or joint ventures to implement the project	- The land has not been cleared.	Department of Planning and investment; People's Committees of Mang Thit district. (New proposal according to Official Dispatch No. 2602/UBND-KTNV, dated May 18, 2022 of the People's Committee of Vinh Long province)
<b>C. CULTURE AND TOURISM FIELD</b>							
27	<b>PROJECT OF ECO-TOURISM DESTINATIONS, DUNE RESORT</b>	Tan Hoi ward, Vinh Long city	57 ha	1.000 billion dong	Call on 100% capital of investors or joint ventures to implement the project	-The project is included in the land use planning. -The land has not been cleared.	Department of Planning and Investment; Department of Culture, Sports and Tourism and People's Committee of Vinh Long city
28	<b>PROJECT OF CULTURAL AND SPORTS CLUSTERS OF 4 COMMUNES IN VINH LONG CITY</b>	Tan Hoi ward, Vinh Long city	0,85ha	10 billion dong	Call on 100% capital of investors or joint ventures to implement the project	Public land is managed by the People's Committee of Vinh Long city	Department of Planning and investment; Department of Culture, Sports and Tourism and People's Committee of Vinh Long City
29	<b>RESORT PROJECT</b>	1. Tan Quoi townlet, Binh Tan district. 2. Dong Hau hamlet, Ngai Tu commune, Tam Binh district. 3. Phu Xuan hamlet, Phu Thanh commune, Tra On district.	10 ha – 30 ha	150 billion dong	Call on 100% capital of investors or joint ventures to implement the project	-The project is included in the land use planning -The land has not been cleared	Department of Planning and investment; Department of Culture, Sports and Tourism and People's Committee of districts, towns where the project is located
30	<b>PROJECT OF AGRICULTURAL MUSEUM IN THE MEKONG DELTA COMBINED WITH AGRICULTURAL EXPERIMENTAL ENTERTAINMENT TOURISM</b>	Hamlet 1 and Rach Truc hamlet, Vung Liem townlet	10,2 ha	400 billion dong	Call on 100% capital of investors or joint ventures to implement the project	-The planning is approved (including, 0.8ha of clean land)	Department of Planning and Investment; Department of Culture, Sports and Tourism and People's Committee of Vung Liem district (According to Official Dispatch No. 2602/UBND-KTNV, dated May 18, 2022 of the People's Committee of Vinh Long province)
31	<b>DAI ISLAND ECO-TOURISM PROJECT</b>	Thanh Binh commune – Quoi Thien commune, Vung Liem district	2.220 ha	1.500 billion dong	Call on 100% capital of investors or joint ventures to implement the project	According to planning	Department of Planning and Investment; Department of Culture, Sports and Tourism and People's Committee of Vung Liem district



NO.	NAME OF PROJECT	LOCATION	SCALE/ CAPACITY	INVESTMENT CAPITAL ESTIMATE	FORM OF INVESTMENT	RELATED INFORMATION	CONTACT INFORMATION
32	<b>CAI NGANG SPORTS AND CULTURE COMPLEX PROJECT</b>	Hamlet 4, Phu Loc commune, Tam Binh district (expanding the Cai Ngang revolutionary historical site)	02 ha	30 billion dong	Call on 100% capital of investors or joint ventures to implement the project	Clean land, included in the land use planning	Department of Planning and Investment; Department of Culture, Sports and Tourism and People's Committee of Tam Binh district
33	<b>MANG THIT CONTEMPORARY HERITAGE</b>	Communes: My An, My Phuoc, Nhon Phu, Hoa Tinh of Mang Thit district	3.000 ha	3.450 billion dong	Call on 100% capital of investors or joint ventures to implement the project	The land has not been cleared	Department of Planning and Investment; Department of Culture, Sports and Tourism and People's Committee of Mang Thit district  (According to Official Dispatch No. 2602/UBND-KTNV, dated May 18, 2022 of the People's Committee of Vinh Long province)
<b>D. RBAN – HOUSING FIELD</b>							
34	<b>ECOLOGICAL URBAN AREA, COMMERCIAL SERVICES, ENTERTAINMENT AND DUNES TOURISM</b>	Tan Ngai ward, Vinh Long city	126 ha	3.150 billion dong	Call on 100% capital of investors or joint ventures to implement the project	According to planning. The land has not been cleared	Department of Planning and Investment; Department of Construction; People's Committee of Vinh Long city
35	<b>ADMINISTRATIVE CENTER URBAN AREA OF VINH LONG PROVINCE</b>	Ward 9 and Truong An ward, Vinh Long city	300 ha	7.500 billion dong	Call on 100% capital of investors or joint ventures to implement the project	The land has not been cleared	Department of Planning and Investment; Department of Construction; People's Committee of Vinh Long city
36	<b>AN BINH AGRO-ECOLOGICAL URBAN AREA</b>	An Binh commune, Long Ho district	708 ha	9.240 billion dong	Call on 100% capital of investors or joint ventures to implement the project	The land has not been cleared	Department of Planning and Investment; Department of Construction; People's Committee of Long Ho district
37	<b>NEW URBAN AREA IN MY HOA, BINH MINH TOWN</b>	My Hoa commune, Binh Minh town	500 ha	8.053 billion dong	Call on 100% capital of investors or joint ventures to implement the project	The land has not been cleared	Department of Planning and Investment; Department of Construction; People's Committee of Binh Minh town
38	<b>GENTRIFICATION RESIDENTIAL AREA OF THE CENTRAL CITY IN BINH MINH 1 TOWN</b>	Cai Von ward, Binh Minh town	9,808 ha	450 billion dong	Call on 100% capital of investors or joint ventures to implement the project	The land has not been cleared	Department of Planning and Investment; Department of Construction; People's Committee of Binh Minh town
39	<b>GENTRIFICATION RESIDENTIAL AREA OF THE CENTRAL CITY IN BINH MINH 2 TOWN</b>	Cai Von ward, Binh Minh town	9,861 ha	500 billion dong	Call on 100% capital of investors or joint ventures to implement the project	The land has not been cleared	Department of Planning and Investment; Department of Construction; People's Committee of Binh Minh town
40	<b>PROJECT OF RESIDENTIAL AREA, RESETTLEMENT OF DONG BINH INDUSTRIAL ZONE</b>	Dong Binh commune, Binh Minh town	26,63 ha	216 billion dong	Call on 100% capital of investors or joint ventures to implement the project	The land has not been cleared	Department of Planning and Investment; Department of Construction; People's Committee of Binh Minh town

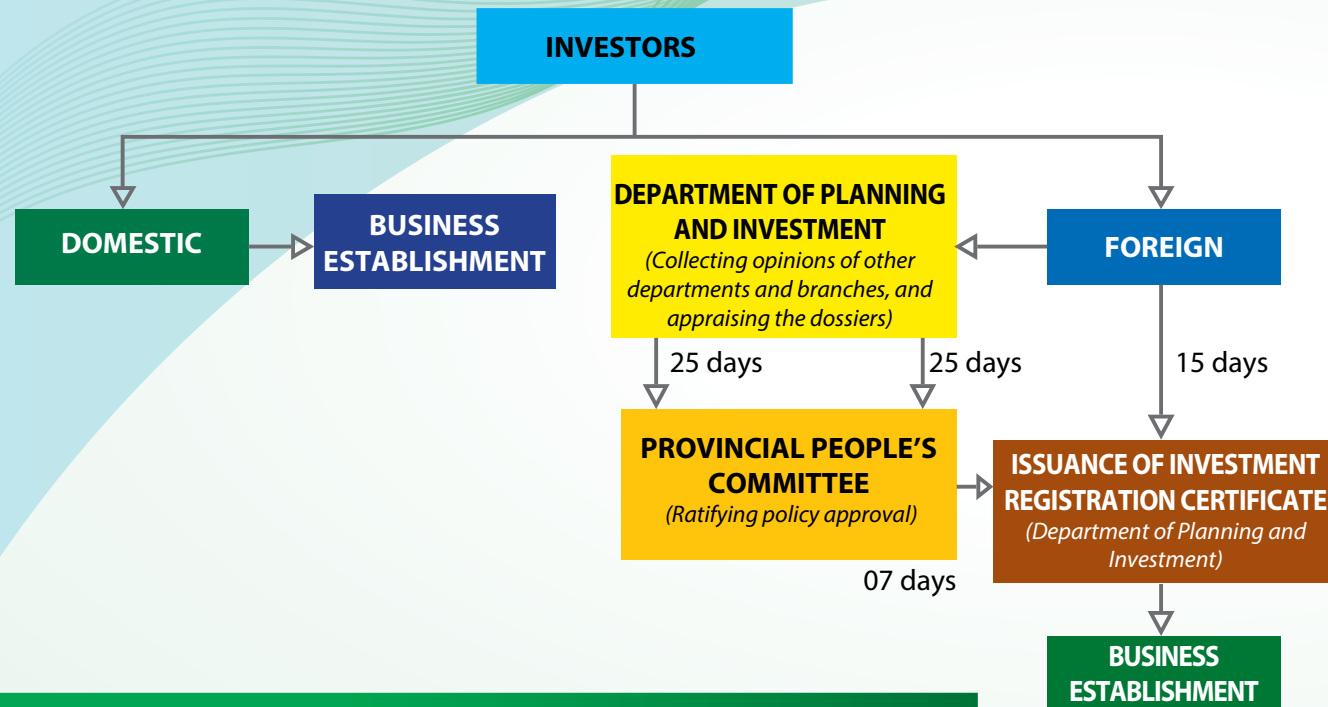
NO.	NAME OF PROJECT	LOCATION	SCALE/ CAPACITY	INVESTMENT CAPITAL ESTIMATE	FORM OF INVESTMENT	RELATED INFORMATION	CONTACT INFORMATION
41	<b>NEW URBAN AREA AND COMPLEX OF ENTERTAINMENT AND RESORT SERVICES IN TAN QUOI, BINH TAN DISTRICT</b>	Tan Quoi townlet, Binh Tan district	330 ha	5.315 billion dong	Call on 100% capital of investors or joint ventures to implement the project	The land has not been cleared	Department of Planning and Investment; Department of Construction; People's Committee of Binh Tan district
42	<b>PROJECT OF RESIDENTIAL AREA, RESETTLEMENT OF BINH TAN INDUSTRIAL ZONE</b>	Tan Quoi townlet, Binh Tan district	30 ha	240 billion dong	Call on 100% capital of investors or joint ventures to implement the project	The land has not been cleared	Department of Planning and Investment; Department of Construction; People's Committee of Binh Tan district
43	<b>PROJECT OF RESIDENTIAL AREA, RESETTLEMENT OF AN DINH INDUSTRIAL ZONE</b>	An Phuoc commune, Mang Thit district	26 ha	208 billion dong	Call on 100% capital of investors or joint ventures to implement the project	The land has not been cleared	Department of Planning and Investment; Department of Construction; People's Committee of Mang Thit district
44	<b>INVESTMENT IN CONSTRUCTION OF HOUSES IN COMBINATION WITH TRADE AND SERVICES IN TRA ON TOWN</b>	Zone 7, Zone 8, Tra On townlet, Tra On district	30 ha	350 billion dong	Call on 100% capital of investors or joint ventures to implement the project	According to planning. Uncleared land (can be divided into several stages of implementation)	Department of Planning and Investment; Department of Construction; People's Committee of Tra On district
45	<b>INVESTMENT IN CONSTRUCTION OF HOUSES IN COMBINATION WITH TRADE AND SERVICES IN HUU THANH COMMUNE</b>	Hamlet Quarter, Huu Thanh commune, Tra On district	6 ha	100 billion dong	Call on 100% capital of investors or joint ventures to implement the project	According to planning. Uncleared land	Department of Planning and Investment; Department of Construction; People's Committee of Tra On district
46	<b>INVESTMENT IN CONSTRUCTION OF TECHNICAL INFRASTRUCTURE IN ZONE 10A, TRA ON TOWN</b>	Zone 10a, Tra On townlet, Tra On district	1,29 ha	45 billion dong	Call on 100% capital of investors or joint ventures to implement the project	According to planning. Public land, clean land	Department of Planning and Investment; Department of Construction; People's Committee of Tra On district
47	<b>SOCIAL HOUSING AREA OF HAMLET 6, LONG HO TOWN</b>	Hamlet 6, Long Ho townlet, Long Ho district	5,7 ha	450 billion dong	Call on 100% capital of investors or joint ventures to implement the project	According to planning. Land has not been cleared, of which 1.4ha is planned for kindergarten but has been moved to another location	Department of Planning and Investment; Department of Construction; People's Committee of Long Ho district
<b>E. COMMERCIAL AND SERVICE FIELD</b>							
48	<b>PROJECT OF INVESTMENT FOR CONSTRUCTION AND BUSINESS OF 5-STAR STANDARD HOTELS AND RESTAURANTS</b>	Ward 2, Vinh Long city	1,54 ha (200 rooms)	800 billion dong	Call on 100% capital of investors or joint ventures to implement the project	Public land, not yet cleared, managed by the Provincial Land Fund Development Center	Land Fund Development Center of Vinh Long province
49	<b>PROJECT OF COMMERCIAL – SERVICE CENTER OF VINH LONG CITY</b>	Ward 1, Vinh Long city (cultural center of old Vinh Long province)	7.711,2 m <sup>2</sup>	100 billion dong	Call on 100% capital of investors or joint ventures to implement the project	-The project is included in the land use planning. -Public land under the management of the state.	Department of Planning and Investment; Department of Industry and Trade; People's Committee of Vinh Long city
50	<b>WARD 8 COMMERCIAL CENTER</b>	Ward 8, Vinh Long city	2,74 ha	350 billion dong	Call on 100% capital of investors or joint ventures to implement the project	Public land + uncleared land	Department of Planning and Investment; Department of Industry and Trade; People's Committee of Vinh Long city  (According to Official Dispatch No. 2602/UBND-KTNV, dated May 18, 2022 of the People's Committee of Vinh Long province)



NO.	NAME OF PROJECT	LOCATION	SCALE/CAPACITY	INVESTMENT CAPITAL ESTIMATE	FORM OF INVESTMENT	RELATED INFORMATION	CONTACT INFORMATION
51	<b>PROJECT OF COMMERCIAL – SERVICE CENTER OF BINH MINH</b>	Thanh Phuoc ward, Binh Minh town (the old bus station area)	0,83 ha	200 billion dong	Call on 100% capital of investors or joint ventures to implement the project	Public land, clean land.	Department of Planning and Investment; Department of Industry and Trade; People's Committee of Binh Minh town
52	<b>PROJECT OF COMMERCIAL - SERVICE CENTER COMBINED WITH HOUSING</b>	Dong Thuan ward, Binh Minh town	5,52 ha	700 billion dong	Call on 100% capital of investors or joint ventures to implement the project	Public land, clean land	Department of Planning and Investment; Department of Construction; Department of Industry and Trade; People's Committee of Binh Minh town
53	<b>URBAN GENTRIFICATION PROJECT OF LONG HO DISTRICT</b>	Hamlet 1, Long Ho townlet, Long Ho district	3,1 ha	200 billion dong	Call on 100% capital of investors or joint ventures to implement the project	In which, 7,514.9 m2 is public land (cultural center of Long Ho district)	Department of Planning and Investment; Department of Industry and Trade; People's Committee of Long Ho district
54	<b>PROJECT OF INVESTMENT ON MARKET AND RURAL RESIDENTIAL AREA IN CAU DOI, TAN HANH COMMUNE, LONG HO DISTRICT</b>	Tan Hanh commune, Long Ho district	4,9 ha	250 billion dong	Call on 100% capital of investors or joint ventures to implement the project	According to planning. uncleared land.	Department of Planning and Investment; Department of Industry and Trade; People's Committee of Long Ho district
55	<b>URBAN GENTRIFICATION PROJECT OF CAI NHUM TOWN, MANG THIT DISTRICT</b>	Hamlet 4, Cai Nhum townlet, Mang Thit district	5,36 ha	600 billion dong	Call on 100% capital of investors or joint ventures to implement the project	The land has not been cleared	Department of Planning and Investment; Department of Industry and Trade; People's Committee of Mang Thit district
56	<b>PROJECT OF MARKET AND RURAL RESIDENTIAL AREA IN TAN AN LUONG COMMUNE</b>	Tan An Luong commune, Vung Liem district	4,54 ha	120 billion dong	Call on 100% capital of investors or joint ventures to implement the project	-Included in the land use planning. -Uncleared land (in which, 0.6ha is public land)	Department of Planning and Investment; Department of Industry and Trade; People's Committee of Vung Liem district
57	<b>INVEST IN BUILDING MARKETS AND RURAL RESIDENTIAL AREAS IN QUOI AN COMMUNE</b>	Vam An hamlet, Quoi An commune, Vung Liem district	2,87 ha	60 billion dong	Call on 100% capital of investors or joint ventures to implement the project	Land managed by the state and not yet cleared (in which, 0.94 is public land)	Department of Planning and Investment; Department of Industry and Trade; People's Committee of Vung Liem district
58	<b>URBAN GENTRIFICATION PROJECT OF TAN QUOI, BINH TAN DISTRICT</b>	Tan Quoi townlet, Binh Tan district	11,5 ha	700 billion dong	Call on 100% capital of investors or joint ventures to implement the project	-Included in the land use planning. -The land has not been cleared	Department of Planning and Investment; Department of Industry and Trade; People's Committee of Binh Tan district
59	<b>MY THANH TRUNG COMMERCIAL AREA AND TOWNHOUSE PROJECT</b>	My Trung 1 hamlet, My Thanh Trung commune, Tam Binh district	1,5 ha	80 billion dong	Call on 100% capital of investors or joint ventures to implement the project	In which, 0.4ha is public land, clean land	Department of Planning and Investment; Department of Industry and Trade; People's Committee of Tam Binh district

NO.	NAME OF PROJECT	LOCATION	SCALE/CAPACITY	INVESTMENT CAPITAL ESTIMATE	FORM OF INVESTMENT	RELATED INFORMATION	CONTACT INFORMATION
60	<b>MARKET AND QUARTER OF THOI HOA COMMUNE</b>	Tuong Trinh hamlet, Thoi Hoa commune, Tra On district	1,68 ha	50 billion dong	Call on 100% capital of investors or joint ventures to implement the project	According to planning. public land, clean land	Department of Planning and Investment; Department of Industry and Trade; People's Committee of Tra On district
61	<b>MARKET OF VINH XUAN COMMUNE</b>	Vinh Trinh hamlet, Vinh Xuan commune, Tra On district	0,8 ha	30 billion dong	Call on 100% capital of investors or joint ventures to implement the project	According to planning. uncleared land	Department of Planning and Investment; Department of Industry and Trade; People's Committee of Tra On district
62	<b>COMMERCIAL - SERVICE CENTER AND TOWNHOUSE OF VINH XUAN COMMUNE</b>	Vinh Trinh hamlet, Vinh Xuan commune, Tra On district	1,64 ha	55 billion dong	Call on 100% capital of investors or joint ventures to implement the project	According to planning. uncleared land	Department of Planning and Investment; Department of Industry and Trade; People's Committee of Tra On district
63	<b>PHUOC YEN COMMERCIAL CENTER</b>	Phuoc Yen A hamlet, Phu Quoi commune, Long Ho district (current Phuoc Yen market)	2.500 m <sup>2</sup>	13 billion dong	Call on 100% capital of investors or joint ventures to implement the project	Public land.	Department of Planning and Investment; Department of Industry and Trade; People's Committee of Long Ho district
<b>F. ENVIRONMENTAL PROTECTION FIELD</b>							
64	<b>PEOPLE'S CEMETERY OF VINH LONG PROVINCE</b>	Tan Nhon hamlet, Tan Hoa ward, Vinh Long city	10 ha	60 billion dong	Call on 100% capital of investors or joint ventures to implement the project	Uncleared land. approved planning 1/500	Department of Planning and Investment; Department of Labor, War Invalids and Social Affairs and the People's Committee of Vinh Long city (have investors)
65	<b>WASTE TREATMENT PLANT PROJECT OF LONG HO DISTRICT</b>	Hoa Phu commune, Long Ho district	300-500 ton/day and night	500 billion dong	Call on 100% capital of investors or joint ventures to implement the project	Public land, uncleared land	Department of Planning and Investment; the People's Committee of Long Ho district  (New proposal according to Official Dispatch No. 2602/UBND-KTNV, dated May 18, 2022 of the People's Committee of Vinh Long province)

## PROCESS FOR ISSUANCE OF INVESTMENT REGISTRATION CERTIFICATE, INVESTMENT POLICY APPROVAL



## INVESTMENT REGISTRATION DOSSIER

- 1 - A written request for implementation of the investment project, including a commitment to bear all costs and risks if the project is not approved;
- 2 - Documents on the investor's legal status;
- 3 - Documents proving the investor's financial capacity, including at least one of the following documents: financial statements of the last 02 years of the investor; commitment to financial support by the parent company; commitment to financial support by a financial institution; guarantee on the financial capacity of the investor; other documents proving the financial capacity of the investor;
- 4 - Investment project proposal includes the following main contents: investor or investor selection form, investment objective, investment scale, investment capital and capital mobilization plan, location, deadline, implementation progress, information on the current status of land use at the project site and proposal for land use demand (if any), labor demand, proposal for investment incentives, impacts and socio-economic efficiency of the project, and preliminary assessment of environmental impacts (if any) in accordance with the law on environmental protection.  
If the construction law stipulates the preparation of a pre-feasibility study report, the investor may submit such report instead of the investment project proposal;
- 5 - In case the investment project does not request the State to allocate or lease land or permit the change of land use purpose, a copy of the land use right certificate or other documents determining the right to use the site must be submitted to carry out investment projects;
- 6 - Contents of explanation about the technology used in the investment project, for projects subject to appraisal and collection of opinions on technology in accordance with the law on technology transfer;
- 7 - BCC contract for investment projects in the form of BCC contract;  
(Other documents related to the investment project and requirements on conditions and capacity of the investor as prescribed by law (if any)).

## CONTACTS FOR RECEIPT OF INVESTMENT

### INVESTMENT PROMOTION AND SUPPORT CENTER OF VINH LONG PROVINCE

Address: 5th floor, No. 88B, Vo Van Kiet street, cluster 3, ward 9, Vinh Long City, Vinh Long Province  
 Phone: 02703 834 031  
 Fax: 02703 823 499  
 Email: ipbc@vinhlong.gov.vn  
 Website: www.ipbc.vinhlong.gov.vn

## NECESSARY ADDRESSES

**1. PEOPLE'S COMMITTEE OF VINH LONG PROVINCE**  
 Address: 2nd, 3rd floor, No. 88, Vo Van Kiet street, cluster 3, ward 9, Vinh Long City, Vinh Long Province  
 Phone: 02703 823 100  
 Fax: 02703 823 774  
 Email: ubnd@vinhlong.gov.vn  
 Website: www.vinhlong.gov.vn

**2. DEPARTMENT OF PLANNING AND INVESTMENT OF VINH LONG PROVINCE**  
 Address: 2nd, 3rd floor, No. 88B, Vo Van Kiet street, cluster 3, ward 9, Vinh Long City, Vinh Long Province  
 Phone: 02703 823 319  
 Fax: 02703.828.033  
 Email: skehoach@vinhlong.gov.vn  
 Website: www.skhdt.vinhlong.gov.vn

**3. INDUSTRIAL PARK MANAGEMENT BOARD OF VINH LONG PROVINCE**  
 Address: No. 85, Trung Nu Vuong Street, Ward 1, Vinh Long City, Vinh Long Province  
 Phone: 02703 820 972  
 Fax: 02703 820 972  
 Email: banqlkc@vinhlong.gov.vn  
 Website: www.khucongnghiiep.vinhlong.gov.vn

**4. DEPARTMENT OF INDUSTRY AND TRADE OF VINH LONG PROVINCE**  
 Address: No. 2A, Hung Vuong Street, Ward 1, Vinh Long City, Vinh Long Province  
 Phone: 02703 830 330  
 Fax: 02703 826 347  
 Email: scongthuong@vinhlong.gov.vn  
 Website: www.sct.vinhlong.gov.vn

**5. DEPARTMENT OF NATURAL RESOURCES AND ENVIRONMENT OF VINH LONG PROVINCE**  
 Address: No. 42B, Pham Thai Buong Street, Ward 4, Vinh Long City, Vinh Long Province  
 Phone: 02703 822 242  
 Email: stnmt@vinhlong.gov.vn  
 Website: www.stnmt.vinhlong.gov.vn

**6. CONSTRUCTION DEPARTMENT OF VINH LONG PROVINCE**  
 Address: No. 80, Tran Phu Street, Ward 4, Vinh Long City, Vinh Long Province  
 Phone: 02703 852 038  
 Email: sxaydung@vinhlong.gov.vn  
 Website: www.sxd.vinhlong.gov.vn

**7. TAXATION DEPARTMENT OF VINH LONG PROVINCE**  
 Address: No. 6C, Group 37A, Hamlet 5, Ward 9, Vinh Long City, Vinh Long Province  
 Phone: 02703 823 559  
 Fax: 02703 826 298  
 Website: www.vinhlong.gdt.gov.vn

**8. VINH LONG BORDER-GATE CUSTOMS DEPARTMENT**  
 Address: No. 80, Pho Co Dieu, Ward 3, Vinh Long City, Vinh Long Province  
 Phone/Fax: 02703 823 360  
 Email: trantb@customs.gov.vn

- **Chịu trách nhiệm xuất bản:** Trung tâm Xúc tiến Đầu tư và Hỗ trợ doanh nghiệp Vĩnh Long

- **Đơn vị phối hợp thực hiện:** Công ty TNHH MTV Truyền thông Đầu tư và Thương mại Nam Phương (TP. Cần Thơ)

- **Giấy phép xuất bản:** Số /GP-STTTT, của Sở Thông tin và Truyền thông TP. Cần Thơ cấp ngày / /2022. In xong và nộp lưu chiểu tháng năm 2022.

- **In tại:** Cty Cổ phần In Tổng hợp Cần Thơ, số 500 đường 30 tháng 4, phường Hưng Lợi, quận Ninh Kiều, TP. Cần Thơ.



